



COMPANY PROFILE



Dependable human augmentations

Contents

03 The founder

04 Our vision, Our mission, Strategic focus

05-08 Our solutions offering

09 Transformation management, Digital business processes

10 Business intelligence and data analytics

11 Project funding

12-13 Case studies

THE FOUNDER ■

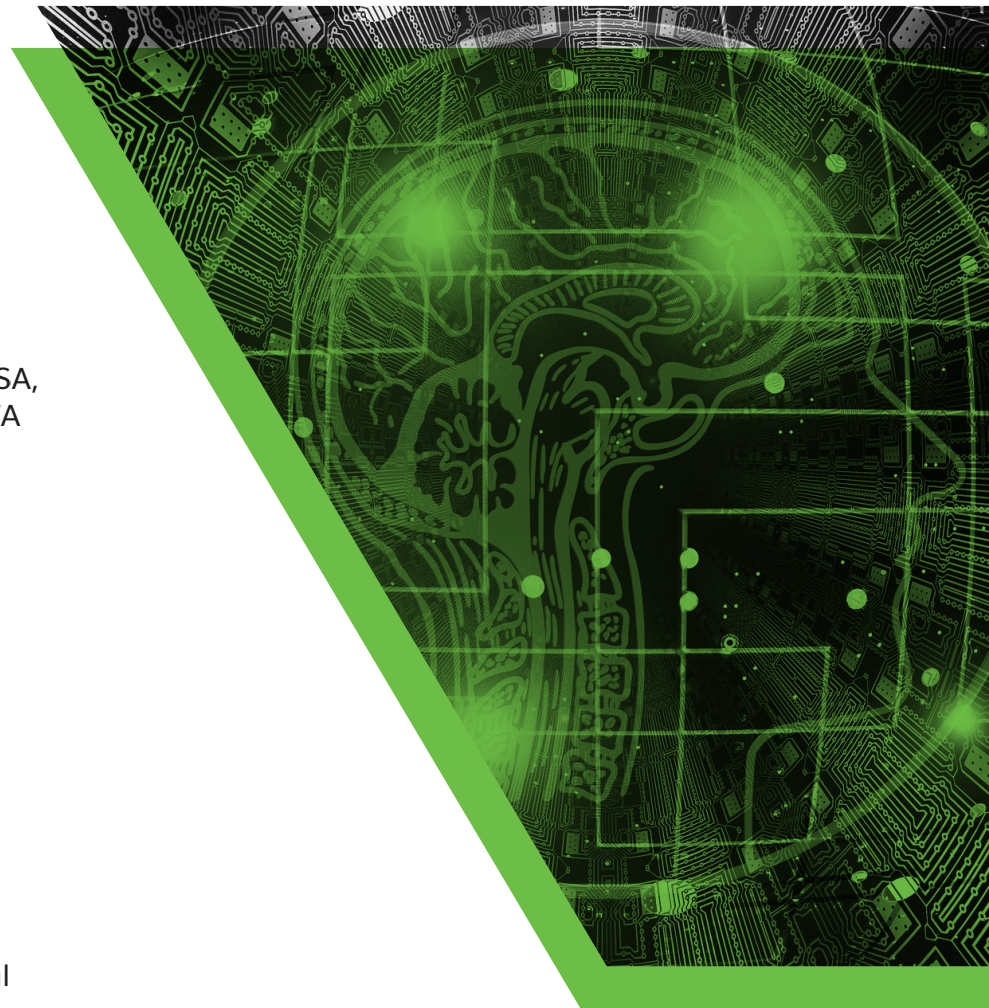
Sandile Zulu Studied a Graduate Diploma in Marketing through the Institute of Marketing Management (IMM). He later enrolled for a Masters in Business Administration through the University of KwaZulu Natal – Incomplete – dissertation stage. Throughout his career he also studied for on Job training courses like ITL- Contracts Management, Oracle Flexcube and Utilities Certifications.

From 1996 Mr Zulu has worked for Global Blue-Chip Companies such as Revlon SA, Dimension Data, Choice Technologies, Mobile Telephone Networks-MTN and SITA at various senior management levels. In 2008 He ventured into entrepreneurship in Technology and Mining – Commodities Trading and Related logistics. Faced with a number of challenges developing projects he developed a network of global bankers and Venture Capital houses in Europe, USA and Asia.

Through these relationships we succeeded in raising capital for Mineral Commodities Trading, Bulk Vessel Fuel Trades, Acquisitions of Mines and development Capital. This opportunity was then made an unassailable competitive advantage that would give **SPECROLL** an opportunity to structure dedicated capital to develop and transform organizations.

This means **SPECROLL** raises money for your business and they develop a technological roadmap to ensure capital is deployed the most effective way. Our experience in Strategic Management means we align our customers vision with technology of the future to enable business success that guarantees capital repayment.

WHEN OUR CUSTOMER WINS, WE DO TOO...

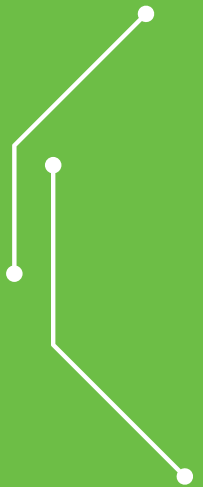


OUR VISION

We remain focused on developing technology that enhances human cognitive abilities

OUR MISSION

"to be a recognisable leader in the efficiency driven internet of things human augmentation solutions"



STRATEGIC FOCUS ■

- We are a 100% Black Owned Company that specialises in providing technology inclined business rescue & reengineering Consulting Services. Our Capital raising and technology driven organizational ecosystem solutions are made for Banking, Broadcasting, Mining, Logistics and Government institutions.
- We have put together a strategic team of academics in the field of **BANKING-GOVERNANCE-MARKETING-CORPORATE & PUBLIC SECTOR LAW AND COMMUNICATION TECHNOLOGY** to work on developing unassailable competitive advantage for our customers through the use of technology.
- We view technology as a key enabler that must be guided by business or organizational imperatives at all times. It therefore becomes important that when dealing with customer operations bottlenecks we align their Mission & Vision with a sound technological roadmap. Ours is to enter into collaborations with our customers to share the spoils of achieving their goals. The idea is to enter into efficiency driven service level agreements where we are measured on resultant growth derived by change in technology and investment direction.



OUR SOLUTIONS OFFERING ■

- Transformation Management
- Digital & Business Processes Services
- Infrastructure Management Services
- Business Intelligence & Analytics
- Enterprise Solutions
- Broadcasting Studio Solutions
- Municipal Ecosystem Restructuring

Trac. N Trace SolutionS

The Trac. N Trace component of our solution addresses the issue of device and data security. It will involve the tracking and tracing of Smartboards, Laptops and Studio equipment throughout the country.

This is Specroll's ways of ensuring that our customers only spends once on the device from cradle to grave.

The Solution has three components:

- The Call Centre
- The Tracking Device Mechanism
- Ground Security Force

Call Centre

This solution comes with a dedicated call centre that always provides real time movement of devices. This call centre will also be used to log calls that pertains to:

- Repairs and related Technical Support
- Emergencies Stress Call- in case of theft/loss

Data analytics software will also be embedded in the solution that will be used to provide the Department of Education with the following reports:

- Permission-based user roles
- Reporting tools for educator usage and learner usage
- An educator friendly console for managing content and learners
- A Classroom Activity Monitor (CAM)
- CAM enables educators to monitor exactly what learners are doing on their laptops during class time
- CAM provides a quick real-time overview of class behaviour (red, yellow and green behaviour)
- CAM allows individual drill-down behaviour monitoring to see how learners engage with their textbooks and with the additional material provided by educators, allowing educators to address issues as they arise
- Assessment Creation Tools
- Calendar Event Creations based on user role
- Instant overview of educators and learner activity throughout the school.

KWAZULU NATAL DEPARTMENT OF EDUCATION E-LEARNING PLATFORM – SPECROLL

Since 2016 the Department of Education in KwaZulu Natal has been investigating ways of delivering curriculum content using computer technology. The study led to the realisation that the state is not able to provide the requisite resources to this project due to the following challenges:

- Capital – The project requires approximately R12Billion to provide all high school and educators with computer devices including Smart Boards in each every class across the province. SPECROLL managed to source the said funds and sent approval to the department
- Curriculum Content – The said devices would be useless if they did not have curriculum relevant material with each and every device.
- Able End-Users – Both educators and learners need extensive training in using the devices in question for them to yield the desired results – Academic Excellence
- Connectivity – KZN is a rural province, we had to devise a hybrid solution of VSAT-GSM-FIBRE infrastructure for an immediate access to internet anywhere
- Security – Trac N Trace solution meant we'll offer insurance for the devices, recover and replace all stolen & lost devices over an agreed period

The project is under consideration by the department and permission to check validity of the reference must be granted by the HOD to vetted interested parties.

Device Tracking Mechanism

This is a device tracking platform that is integrated into the firmware of devices. This module has two functions:

- Device movement tracking
- Device Data Protection

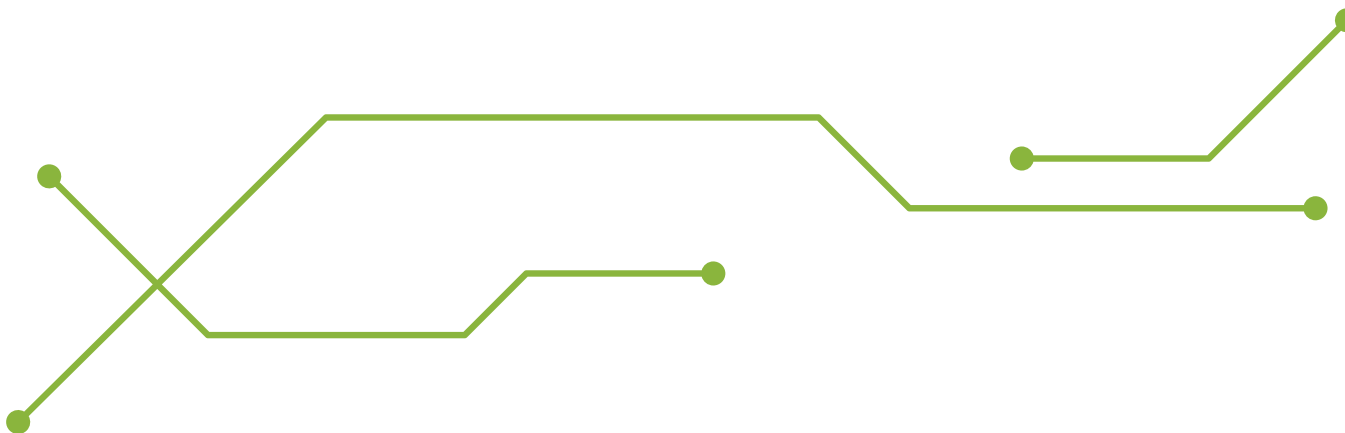
Device Movement Tracking

Every Smartboard device installed and handed to end-users (Teachers and Learners) will have this module installed in line with its operating system. This module will collect necessary data about the end-user general locale and usage patterns. It has data analytics and intelligence capacity to our research and development team on how access and services can be improved as the years go by.

Device Data Protection

Data security is necessary in any educational institution, Your Learners, Educators and staff rely on responsible management of their confidential data. Whether you are handling private data or personally identifiable information, protected health information, learner records or other confidential material – you need a way to keep it safe.

This module has a mechanism to keep track of the devices managed, remotely lock or encrypt them to thwart unauthorised users. It also has capacity to remotely wipe any device that is lost or stolen to prevent data breach. The wiped data will be available to the rightful end-user at the reboot stage. This tool is also crucial as it is deemed prudent to issue clean devices at a stage where devices must be passed on to new users. The Cloud Storage Facility will also ensure that for reference, users may access their previous year's work as it would be with traditional books and learning materials.



Equipment Recovery and Replacement

The call centre, on receiving the StressCall, will dispatch the nearest recovery team to where the device is signalling. The back-end team will send details of the location in question and images of property via satellite/GSM. This may even be a moving signal like human being carrying the device.

Should it happen that our recovery team is unable to recover the device, a replacement claim will be logged on the same Call Centre for us to replace. The claims can only be refuted if there's verifiable negligence on the end-user or the Department.



TRANSFORMATION MANAGEMENT ■

- Turnkey Capital Raising and Enterprise Architecture Consulting
- Business Processes Reengineering Consulting
- Applications development
- Services Oriented Architecture and Integration
- On time data availability
- Data integrity and security

DIGITAL BUSINESS PROCESSES

Most world markets have matured in the way services are delivered in this dynamic economy. There is a paradigm shift in measuring organizational performance from SLA to organizational outcomes driven KPIs, with the help of best class delivery along with automation

Our transparent approach of disrupting the industry through automation, thus causes cannibalization of FTE based revenue. However it doesn't deter us from offering upfront value (mostly capital) which paves way for long-term trust relationships



BUSINESS INTELLIGENCE & DATA ANALYTICS ■

Today the world is moving from the 24-hour economy to the experience economy. Customer experience is taking centre stage and zero balance to failure is becoming the new norm. Enterprises need to reinvent their business their go-to-market strategies, embrace new disruptive technologies and solidify their data foundation to succeed in the digital world

With confluence of technologies such as hyper-hybrid cloud, gamification, enterprise mobility, social collaboration platforms, robotics, IoT, cognitive computing, augmented reality, 3D Printing, accelerate digitization data is and will remain the lifeblood of the organization. That is why the data to digital journey begins and ends with data.

PROJECT FUNDING ■

SOUTH AFRICA and Africa as whole has a dire need for development funding that is not tied to political and economic manipulation by the said funder or NGO. Our aim is to introduce state of the art and innovative technology and funding to government and private project owners to build:

- Smart Cities
- High Employment & Economic Development infrastructure projects
- Railways – Passenger and Cargo
- Power Stations/Energy Generation – Hydro, Coal Powered and Renewables
- Mixed Use Property Development
- Materials Handling Cargo hubs
- Mass eLearning projects
- Large scale revenue collection infrastructure
- Large scale processing and Manufacturing Plants- Oil Refineries/Mineral Smelters

We believe these projects when well executed (Funding-Implementation-Process Management) they can have far reaching positive attributes to the economy of the region and sometimes the country in question at large and most importantly the investors. To qualify for large scale funding, we are looking for customers that are willing and able to raise requisite financial instruments of a minimum One Hundred million United States Dollars using a globally recognised financial institution – Bank

We have a number of options our customers can consider when making an investment decision. These are guided by the fact that we are not an accredited Financial Services company thus making all our transactions be viewed as investors instead of pure capital originators – Forward & Backward integration of our business

Contact us for a detailed analysis of your project finance needs

*“GLOBALIZATION BEGINS WITH A CONNECTED WORLD,
CHOOSE US TO MAP YOUR JOURNEY”*

CASE STUDIES ■

SYNERGENAFRICA – DEVELOPMENT OF A NEW UNIVERSITY CAMPUS IN LIMPOPO

SPECROLL was a capital sourcing company for development of the Tshwane University of Technology Campus in Limpopo. After extensive research, the university found that the majority of their student population travels from Limpopo to settle in Tshwane to attend University. SynergenAfrica identified and secured land from the village of Ga Matlala in Limpopo. This is a greenfield land with no water and electricity infrastructure where they are supposed to build:

- Requisite lecture halls
- Student Residences
- Library
- Campus recreation facilities
- Housing Development (Low -Middle & High End)
- Business District – Malls and related facilities
- Possible Government centres
- Private Hospital

SPECROLL raised \$3bn for this project. This is a long-term concession where SynergenAfrica must BUILD-OPERATE-TRANSFER the campus after an agreed period with the University and the municipality. The first phase of design of civil infrastructure is underway. The company was presented with a Bank Guarantee to secure services of a Global Consulting Engineering firm to undertake the studies

With permission you may contact:

Samson Mamorobela
Cell: 076 066 4740
Email: sam@synergenafrika.co.za

FLORA WATER CONSORTIUM – LIMPOPO DAM HYDRO ELECTRIC DAM DEVELOPMENT CONCESSION FROM LEPELLE NORTHERN WATER UTILITY

LEPELLE NORTHERN WATER expressed its interest in awarding FLORA WATER CONSORTIUM with a BUILD OPERATE & TRANSFER Concession for an agreed period. SPECROLL raised the requisite phase one capital for the pre-feasibility studies of this project that were completed in 2021. The second Phase of this project will be the actual design involving:

1. Hydro-Electric Generation Plant
2. Design and Installation of waterways connecting selected Limpopo Villages
3. Smart Meter installation to ratepaying establishments – Residential & Business
4. Electricity wire connections from Plant to ratepaying establishments – Residential & Business
5. Revenue collection systems
6. Private grid management systems

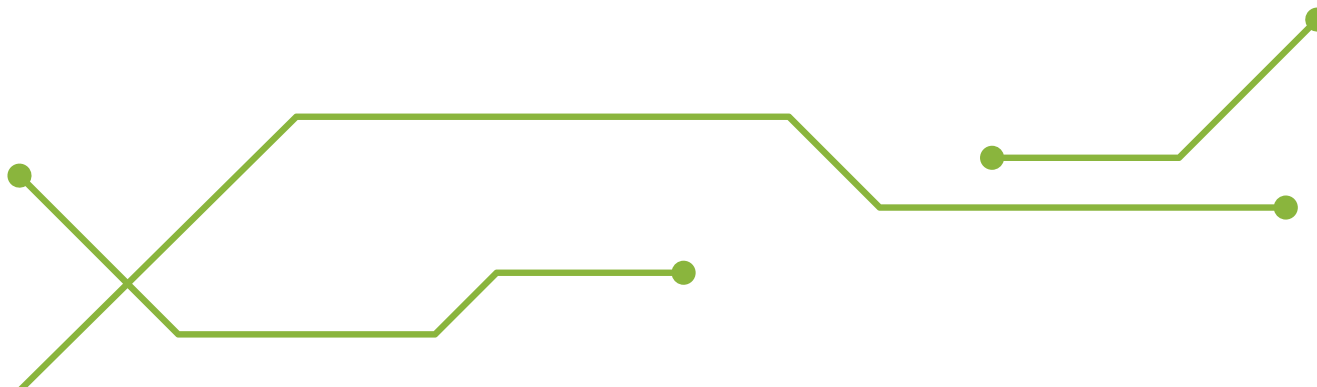
The project is estimated will be complete at the cost of R10 Billion and will be done in phases where capital needs are the sole responsibility of SPECROLL. It is believed that this project is capable of also providing water and electricity to our neighbours Zimbabwe and Botswana

With permission please contact:

Ali Tlabela

Cell: 082 044 1919

Email: ali@tlabela.com





Dependable human augmentations

GET IN TOUCH



Address:

34 Rooielse Rd. Sharonlea
Randburg
2194



Telephone:

+27(0)11 704 8801



Email:

zulus@specroll.co.za



Website:

www.specroll.co.za

